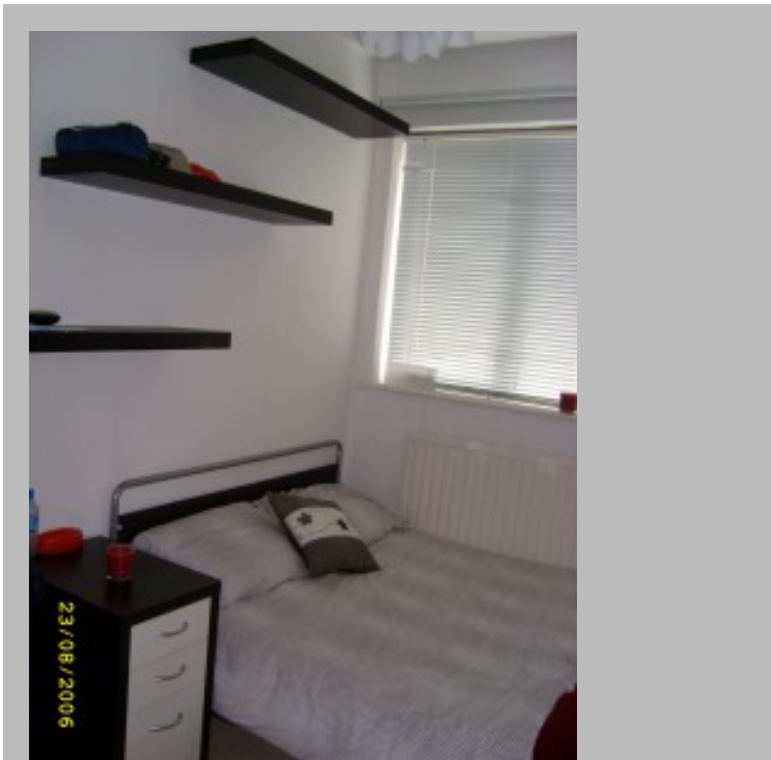


2 Bedroom Ground Floor Flat



Warning: strpos() expects parameter 1 to be string, array given

/home/theonlin/public_html/wp-content/plugins/wp-property
/core/class_functions.php on line 410

Details

Status: Let
Reference: 963079
Town: Brixton
County: London
Postcode: SW2 3UJ
Available From: 01/03/2012
Deposit: 1250.00
Rent: 1250.00
Rent Frequency: pcm
Lease Terms (min): One Year
Reception Rooms: 1
Bedrooms: 2
Bathrooms: 1
Furnishing: Part-Furnished
DSS Allowed?: No
Pets Allowed?: Yes
Smokers Allowed?: Yes (Outside Only)
Features: Spacious 2 Double Bedroom

Features

Spacious 2 Double Bedroom

Description

A 2 double bedroom, ground floor, garden flat, partly furnished in Zone 2, Tulsehill. Located right next to Brockwell Park. There is a private front garden, a communal back garden and private parking facilities. Local shops within 2 mins walking distance. 10 minutes walk to both Tulsehill and Herne Hill Station. Several bus routes within 2 mins of the flat. You can get to Brixton underground in 5 mins. A months rent and deposit required in advance. Available immediately.

Location



Scan the code above with your mobile device to go directly to the The Online Letting Agents Ltd website for 2 Bedroom Ground Floor Flat