

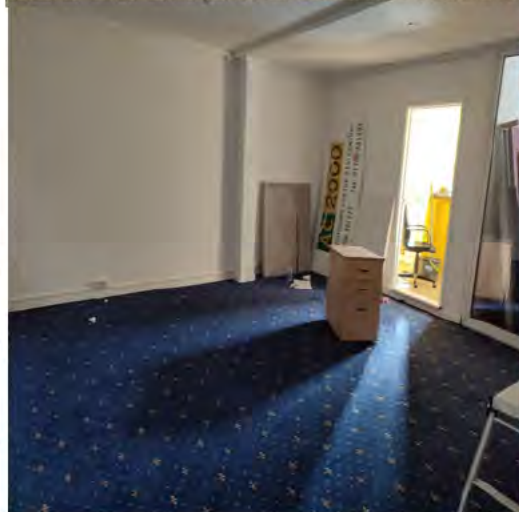
## The Grove Estate



# Business Units

## To Let in large Business Estate Romford Essex

- 1000–2000 Sq. Ft.
- Fully Refurbished
- Private Car Park
- Office s+ Workspace
- Bright Rooms
- Roller Shutter Access
- Two floors
- Can connect to further adjacent Units
- Further free car park
- Ideal offices, Retail, Warehouses. Ebay
- Accountants, Medical
- Beauty, Hairdressers
- Known as the Grove Estate in the Harold Hill Industrial Estate.
- Accessible M25/A12 A118 in 1 minute
- Local to affluent Gidea Park, Romford, Brentwood, Emmerson Park, Hornchurch.
- Walking distance from Tesco, B&Q, BMW, Argos, Next etc.
- In a regeneration area with new infrastructure,
- CROSSRAIL STATION.



The Grove Estate, has been a sought after business location in the area and established for over seventy years. An opportunity is now available to take over this business unit for any use from A3 to D2. New business start up's can be eligible for Business Rates discounts of upto £7,000 p.a. ( Zero Business Rates)

The Estate is within a mile from affluent Gidea Park, Emmerson Park, Hornchurch, Romford, Brentwood etc. And a minute from the A12 and M25. serving London, Essex and Kent.



