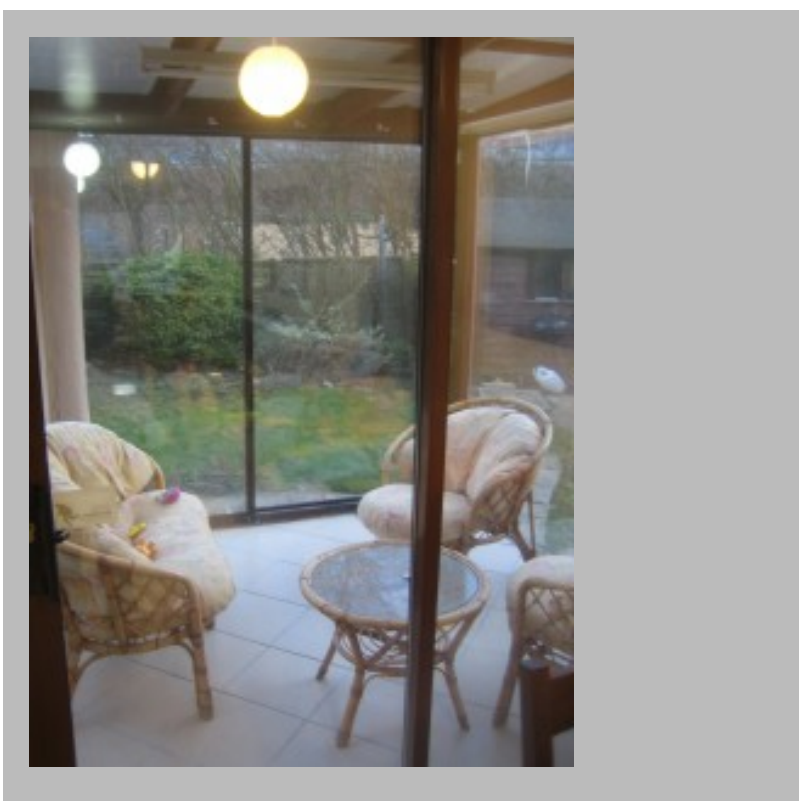
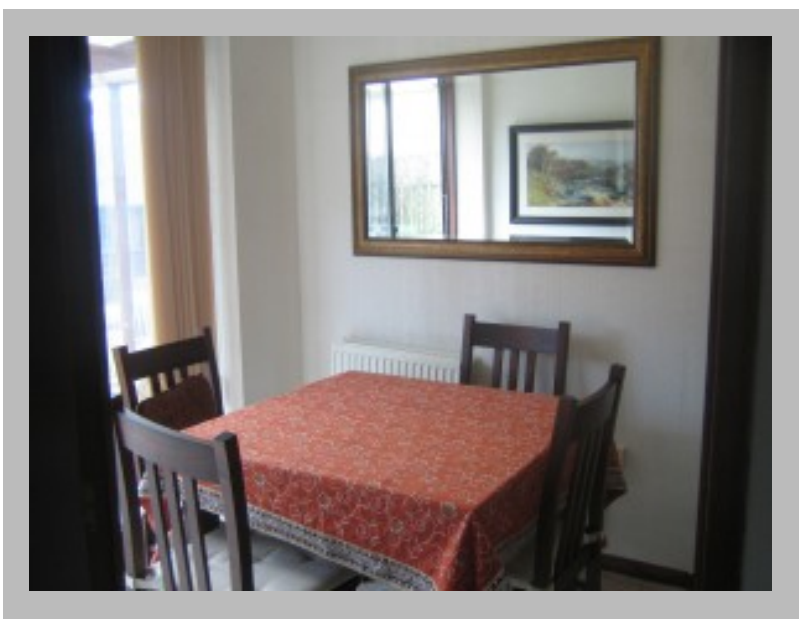
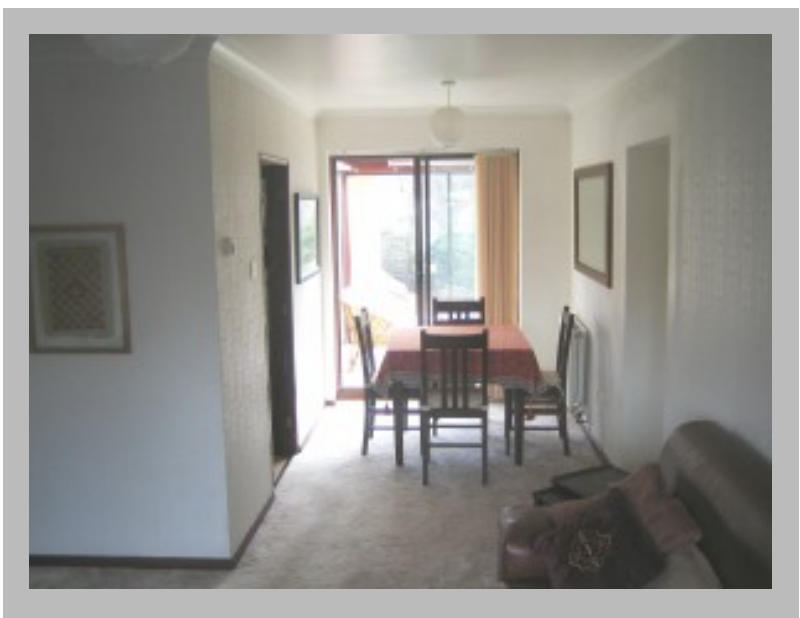
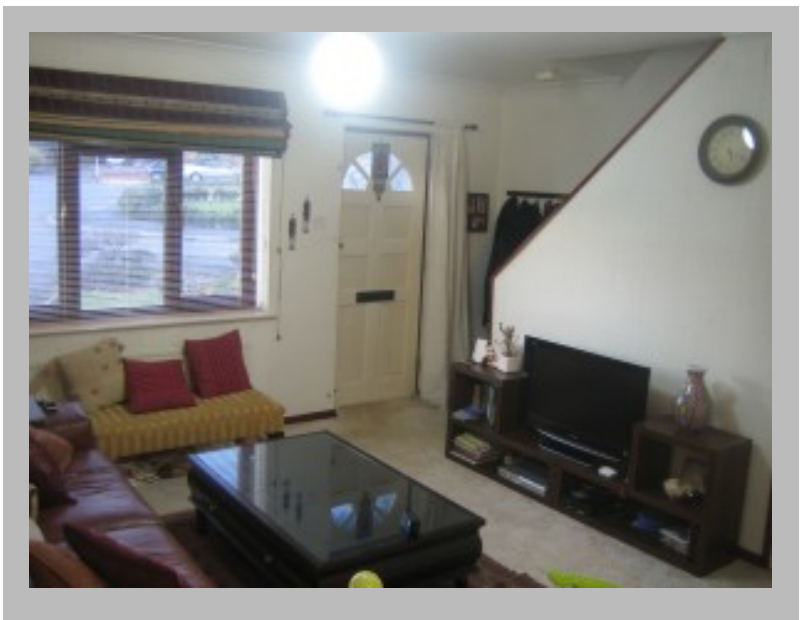


# 3 Bedroom Semi-Detatched House to rent in Peatmoor, Swindon



**Warning:** strpos() expects parameter 1 to be string, array given

/home/theonlin/public\_html/wp-content/plugins/wp-property  
/core/class\_functions.php on line 410

## Details

Status: Let  
Reference: 963056  
Town: Swindon  
County: Wiltshire  
Postcode: SN5 5AW  
Available From: 01/04/2012  
Deposit: 1200.00  
Rent: 730.00  
Rent Frequency: pcm  
Lease Terms (min): One Year  
Reception Rooms: 1  
Bedrooms: 3  
Bathrooms: 2  
Furnishing: Unfurnished  
DSS Allowed?: No  
Pets Allowed?: No  
Smokers Allowed?: No  
Features: South facing Garden, South facing Conservatory, Driveway parking for 2 cars, Gas Central heating, double glazing, close to local amenities and bus stop, walking distance to Peatmoor Lake, quiet Cul de sac, easy access to M4, walking distance to day care and good schools

## Description

We are pleased to present this three bedroom semi detached house located in a quiet cul-de-sac within the popular area of Peatmoor on the Western side of Swindon. The accomodation includes a lounge/diner,

## Features

close to local amenities and bus stop, Double Glazing, Driveway parking for 2 cars, easy access to M4, Gas Central Heating, quiet Cul de sac, South facing Conservatory, South facing Garden, walking distance to day care and good schools, walking distance to Peatmoor Lake

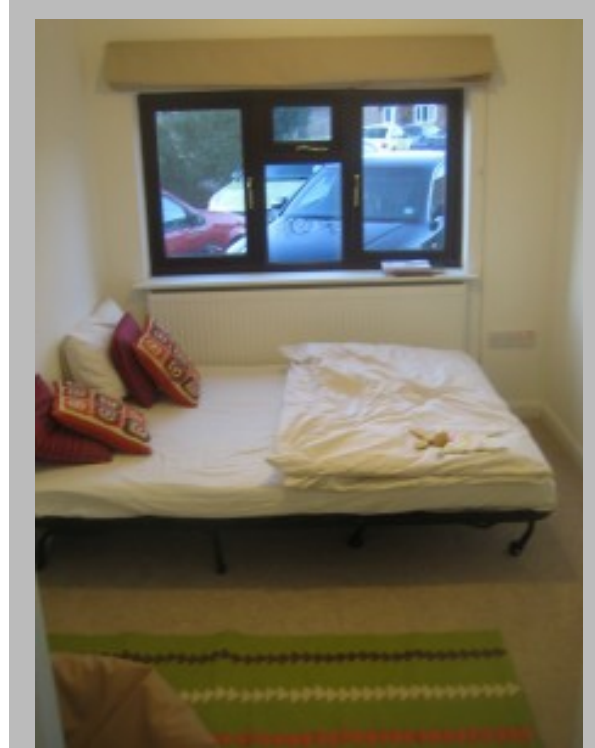


kitchen, conservatory, three bedrooms and two recently refurbished bathrooms and a utility area. Additional benefits include UPVC double glazing, GCH gas central heating and a driveway parking for two cars, a front garden and south easterly enclosed rear garden. Ample visitor parking spaces. Early viewing recommended.

## Location

---





Scan the code above with your mobile device to go directly to the The Online Letting Agents Ltd website for 3 Bedroom Semi-Detached House to rent in Peatmoor, Swindon