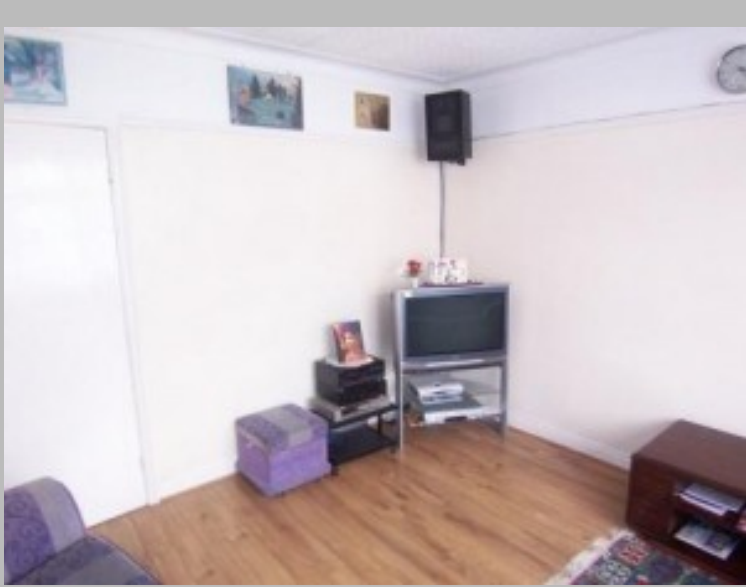


3 bedroom terrace house



Details

Reference: 963149
Deposit: 500.00
Rent: 530.00
Rent Frequency: pcm
Available From: 07/07/2012
Lease Terms (min): Six Months
Reception Rooms: 1
Bedrooms: 3
Furnishing: Furnished
Bathrooms: 1
DSS Allowed?: No
Pets Allowed?: No
Smokers Allowed?: Yes (Outside Only)

Features

Close to Headingley Centre Parks and the Cricket Ground, Close to Many Shops and Local Amenities, Close to the Universities & City Centre, Front and Rear Fencing for Privacy., Near to the Train Stations, Peaceful and Quiet Area, Popular Residential Location

Description

FULLY FURNISHED. Including dishwasher, fridge/freezer, washing machine / dryer, microwave, satellite, DVD, vacuum cleaner,TV, virgin media connection. 3 bedroom terrace house at Park View Avenue in a popular residential location, close to many shops and local amenities. (eg Headingley centre, parks, the cricket ground, train stations, universities & city centre). Peaceful and quiet area. Beautifully newly decorated with pleasant living room. UPVC double glazed, with central heating. Laminate flooring throughout in all downstairs rooms. FULLY FURNISHED. Front and rear yard with flagging and fence for privacy. Shed in back yard. Sky satellite and virgin media installed. Both large bedrooms and dining room have top-to-bottom fitted wardrobes (hence lots of storage space). Cubic standing shower. Fitted burglar and fire alarms. Kitchen and large dining room. UPVC front door to entrance area: Stairs up. Radiator. Laminate wood floor. Door leading into... SITTING ROOM: 3.90m x 3.67m / 12'9? x 12'0? UPVC double glazed front window. Laminate wood floor. Picture rail. Radiator.



Scan the code above with your mobile device to go directly to the The Online Letting Agents Ltd website for 3 bedroom terrace house

Door leading into... DINING ROOM: 3.58m / 3.23m / 11'9" x 10'7" Timber front door out to rear. UPVC double glazed window overlooking rear. Laminate wood floor. Fitted cupboards. Radiator. KITCHEN: 3.58m x 1.17m / 11'8" x 3'9" UPVC double glazed window. Laminate wood floor. Cupboards with sink, gas cooker. Stairs from entrance area up to landing. Doors into... BEDROOM ONE: 4.46m x 2.90m / 14'7" x 9'6" UPVC double glazed window. Radiator. Fitted wardrobe. BEDROOM TWO: 3.12m x 2.78m / 10'3" x 9'1" UPVC double glazed window. BEDROOM THREE: UPVC double glazed window. Radiator. BATHROOM: 2.17m x 1.64m / 7'1" x 5'4" UPVC double glazed window. Shower cubicle, WC and wash basin. OUTSIDE: Front and rear yard zero maintenance. ATTIC: boarded storage space with Velux sky roof window NO DSS/BENEFITS. BOND £500. Please note, by submitting an enquiry regarding this property you agree that we may share your details with the landlord of this property in order to arrange a viewing

Location

