

# DOUBLE ROOM AVAILABLE IN MODERN PROPERTY



## Details

Status: Let  
Reference: 963084  
Town: PETERBOROUGH  
County: Cambridgeshire  
Postcode: PE15RR  
Available From: 15/03/2012  
Deposit: 200.00  
Rent: 350.00  
Rent Frequency: pcm  
Lease Terms (min): Three Months  
Bedrooms: 1  
Furnishing: Furnished  
DSS Allowed?: No  
Pets Allowed?: No  
Smokers Allowed?: Yes (Outside Only)  
Features: CAR PORT, PRIVATE REAR GARDEN, WEEKLY CLEANING SERVICE, LARGE LIVING/DINING ROOM

## Description

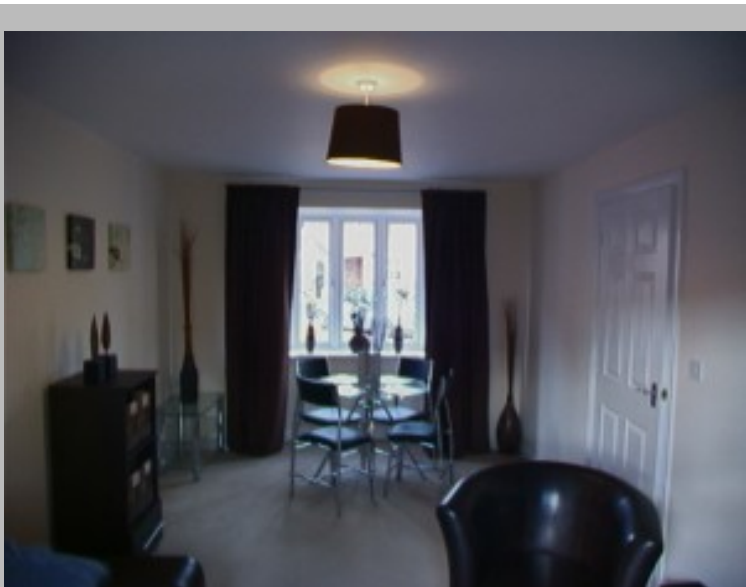
A LOVELY DOUBLE ROOM COMING AVAILABLE IN THIS MODERN PROPERTY CLOSE TO PETERBOROUGH CITY CENTRE. THE ROOM IS QUITE UNIQUE AS IT IS SPLIT INTO TWO PARTS – A BEDROOM AREA AND DRESSING AREA. THE PROPERTY HAS A MODERN BATHROOM AND DOWNSTAIRS TOILET SHARED WITH TWO OTHERS, FULLY FITTED KITCHEN INC DISHWASHER, WASHING MACHINE AND FRIDGE FREEZER, CARPORT AND PRIVATE GARDEN. THE COMMUNAL AREAS ARE CLEANED ON A WEEKLY BASIS

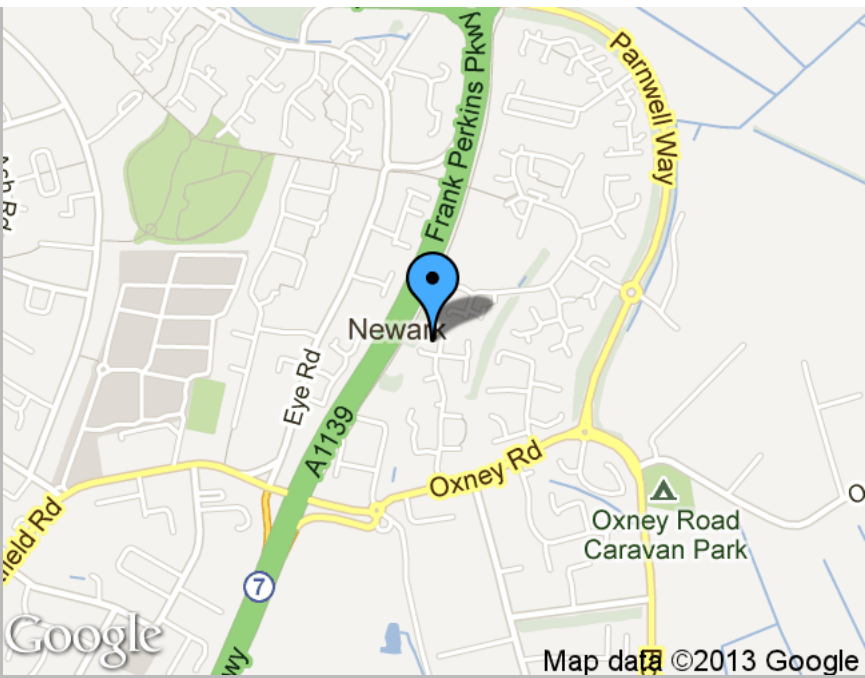
## Location



## Features

CAR PORT, LARGE LIVING/DINING ROOM, PRIVATE REAR GARDEN, WEEKLY CLEANING SERVICE









Scan the code above with your mobile device to go directly to the The Online Letting Agents Ltd website for DOUBLE ROOM AVAILABLE IN MODERN PROPERTY