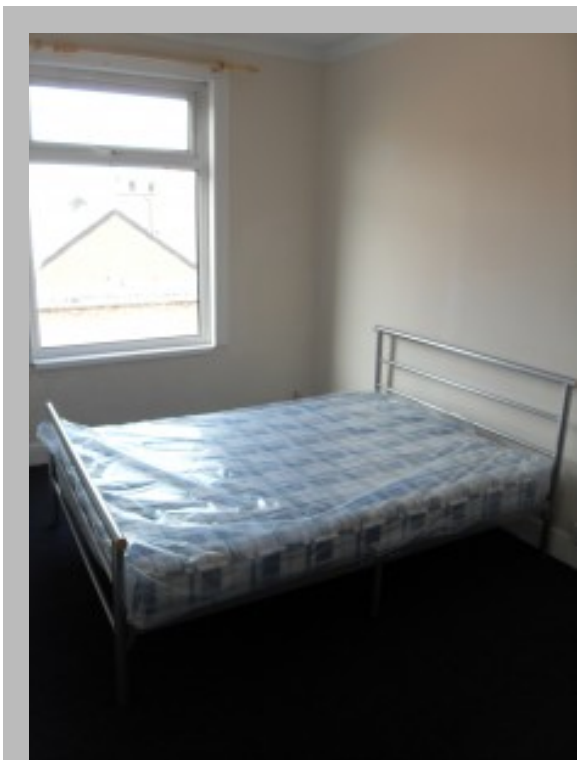


excellent 2 bed terrace house in armley leeds 12



Warning: strpos() expects parameter 1 to be string, array given

/home/theonlin/public_html/wp-content/plugins/wp-property
/core/class_functions.php on line 410

Details

Status: Let
Reference: 963105
Town: leeds
County: West Yorkshire
Postcode: ls12 3eb
Deposit: 375
Rent: 375
Rent Frequency: pcm
Available From: 05/03/2012
Lease Terms (min): Six Months
Reception Rooms: 1
Bedrooms: 2
Furnishing: Unfurnished
Bathrooms: 1
DSS Allowed?: No
Pets Allowed?: No
Smokers Allowed?: Yes
Features: Double glazed,Redecorated,Close to city centre

Description

** Central location to Motorways, ** 15 min walk Leeds City Centre ** Double Glazed ** Redecorated ** Fully Furnished ** 2 Large Double Bedrooms ** Bathroom ** fitted kitchen, Cooker, Fridge Freezer ** sorry no pets or people on Benefits ** Only accept people in full Time Employment ** Six Months Tenancy with option to extend ** Rent £375pcm + bond Sorry, no DSS or pets

Features

Close to City Centre, Double Glazed, Redecorated

Location



Scan the code above with your mobile device to go directly to the The Online Letting Agents Ltd website for excellent 2 bed terrace house in armley leeds 12