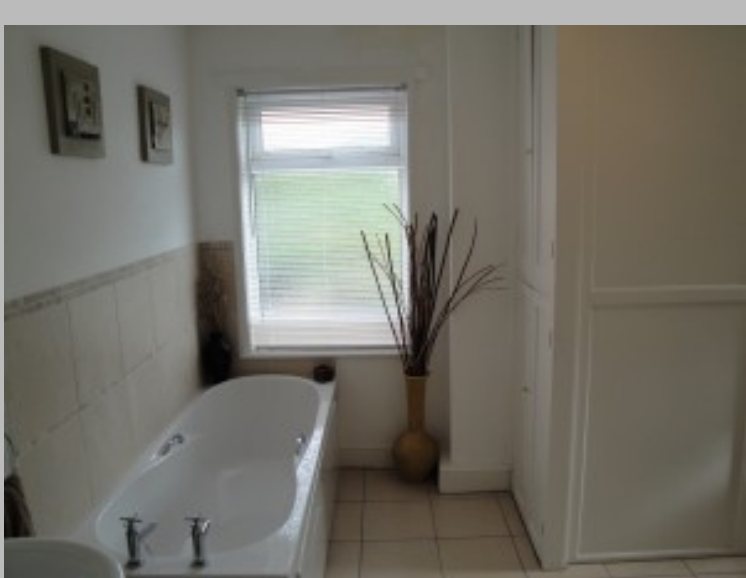


FURNISHED DOUBLE ROOM AVAILABLE IN PROFESSIONAL HOUSESHARE



Details

Status: Let
Reference: 963090
Town: PETERBOROUGH
County: Cambridgeshire
Postcode: pe2 9he
Available From: 30/03/2012
Deposit: 150.00
Rent: 350.00
Rent Frequency: pcm
Lease Terms (min): Six Months
Bedrooms: 1
Bathrooms: 2
Furnishing: Furnished
DSS Allowed?: No
Pets Allowed?: No
Smokers Allowed?: Yes (Outside Only)
Features: LARGE GARDEN, DRIVEWAY
AND GARAGE, FULLY FURNISHED,
CLEANER

Features

CLEANER, DRIVEWAY AND GARAGE, Fully
Furnished, Large Garden

Description

Good size double room available in this fully modernised property close to the city centre of Peterborough. We are looking for one professional person to fit in with the three other young professionals who currently live in this house-share. The property benefits from two bathrooms, fully fitted kitchen, living room, large garden, garage and driveway it is also fully furnished. The rent includes all utility bills, broadband and a cleaning and gardening service Sorry, no DSS or pets

Location



Scan the code above with your mobile device to go directly to the The Online Letting Agents Ltd website for FURNISHED DOUBLE ROOM AVAILABLE IN PROFESSIONAL HOUSESHARE

