

LARGE DOUBLE ROOM AVAILABLE NOW



Details

Status: Withdrawn
Reference: 963118
Town: PETERBOROUGH
County: Cambridgeshire
Postcode: PE25QF
Available From: 09/05/2012
Deposit: 150.00
Rent: 250.00
Rent Frequency: pcm
Lease Terms (min): Three Months
Bedrooms: 6
Bathrooms: 3
Furnishing: Furnished
DSS Allowed?: No
Pets Allowed?: No
Smokers Allowed?: Yes (Outside Only)
Features: GARDEN, MODERN KITCHEN
AND BATHROOM, WEEKLY CLEANER

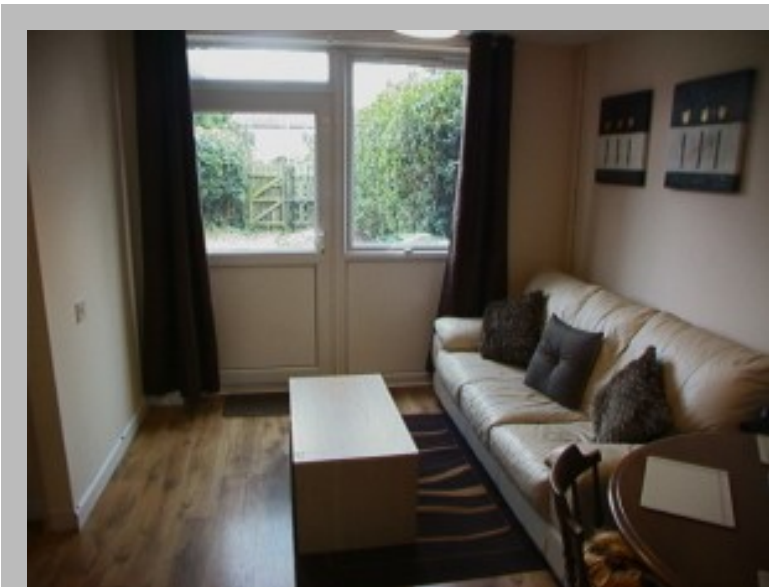
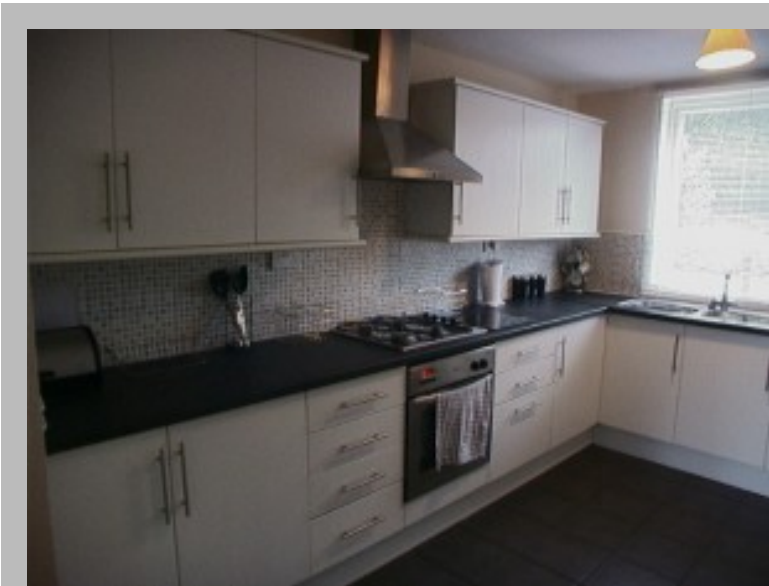
Description

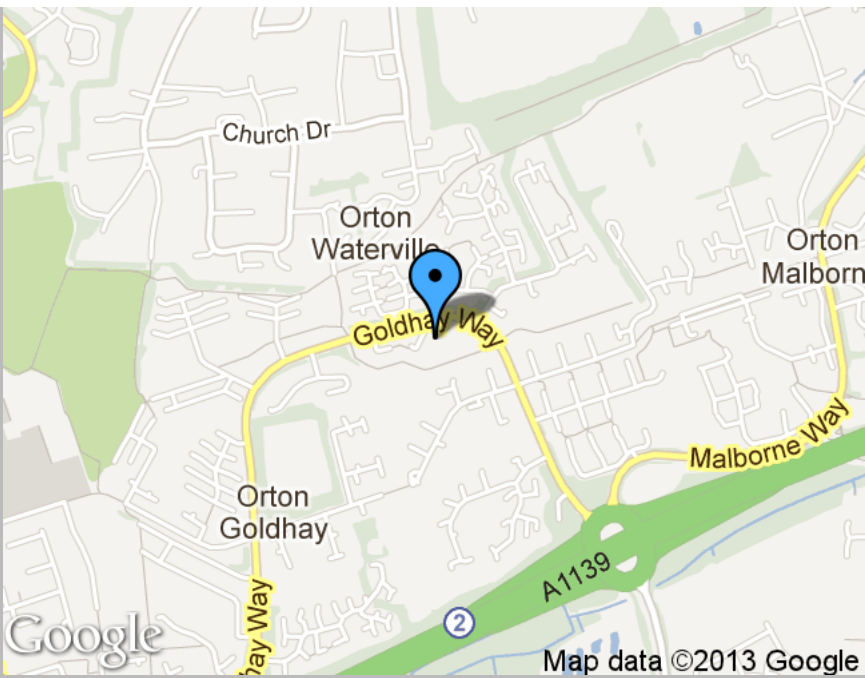
HOUSE SHARE. LARGE DOUBLE ROOM
SUITABLE FOR A SINGLE PERSON OR
COUPLE IN THIS WELL MAINTAINED
QUIET HOUSE-SHARE IN
PETERBOROUGH. THE PROPERTY IS
SITUATED IN ORTON CLOSE TO ORTON
SOUTHGATE AND LYNCHWOOD
INDUSTRIES AND HAS GOOD BUS LINKS
INTO THE CITY CENTRE. WEEKLY
CLEANER INCLUDED IN TOTAL, THE
HOUSE HAS 6 BEDROOMS AND 3
BATHROOMS SORRY, NO DSS OR PETS

Location

Features

Garden, MODERN KITCHEN AND
BATHROOM, Weekly cleaner





Scan the code above with your mobile device to go directly to the The Online Letting Agents Ltd website for LARGE DOUBLE ROOM AVAILABLE NOW

