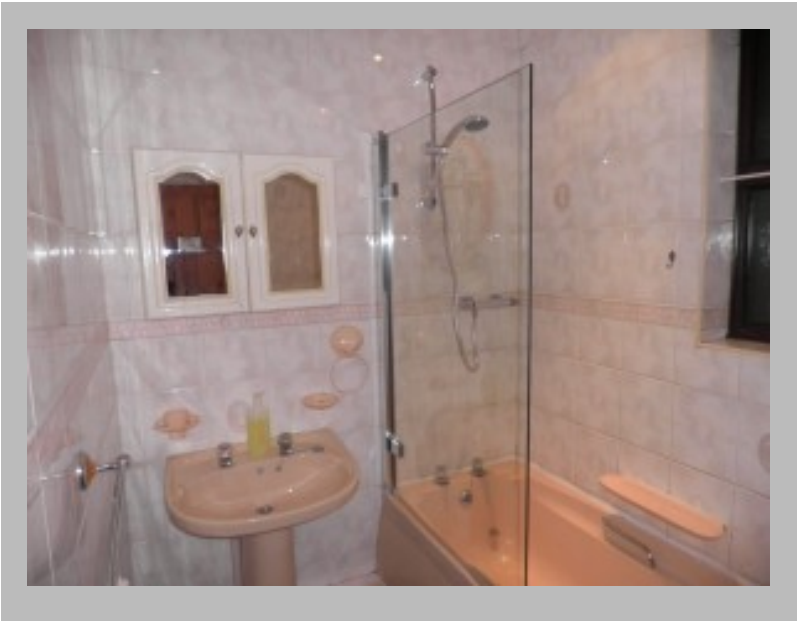


Lovely 3 Bedroom House to let in New Arley, Warwickshire with large front and rear gardens



Details

Reference: 963121
Deposit: 585.00
Rent: 485.00
Rent Frequency: pcm
Available From: immediately
Lease Terms (min): Six Months
Reception Rooms: 2
Bedrooms: 3
Furnishing: Unfurnished
Bathrooms: 1
DSS Allowed?: Yes
Pets Allowed?: Yes
Smokers Allowed?: Yes

Features

Close to Nuneaton or Coventry, M6 / M1 10 mins away, Set in rural village

Description

This house is very clean and tidy offering spacious lounge, separate dining room, nice kitchen and downstairs bathroom with mixer shower, a good sized master bedroom with large gardens to the front and rear. The wiring has recently been upgraded. It is a good sized house which is light and airy and could be a very cozy home. The gardens are large and the rear garden's fence is secure. DSS and pets welcome

Location



Scan the code above with your mobile device to go directly to the The Online Letting Agents Ltd website for Lovely 3 Bedroom House to let in New Arley, Warwickshire with large front and rear gardens

