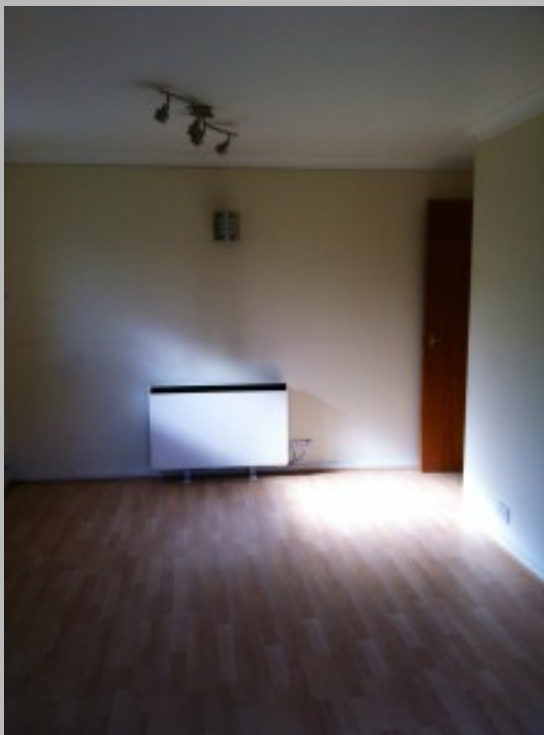


Modern One Bed Flat in Romford



Details

Reference: 963164
Deposit: 1003
Rent: 722
Rent Frequency: pcm
Available From: 25/03/2012
Lease Terms (min): Six Months
Reception Rooms: 1
Bedrooms: Yes
Furnishing: Part–Furnished
Bathrooms: 1
DSS Allowed?: No
Pets Allowed?: No
Smokers Allowed?: Yes (Outside Only)

Features

allocated parking, Close to Local Shops and Amenities, Close to Romford Station, Close to Town Centre, South Facing Communal Garden

Description

Key Features: Spacious, one bedroom flat
Close to Romford station, town centre, local shops and amenities
Bus links and easy access to A127
Ground floor Quiet development in well maintained grounds
Allocated parking
Large living room with patio doors that open on to South facing communal garden
High spec bathroom
Fitted kitchen
Electric heating
Secure entry system
Airing cupboard in hallway
Full description: This spacious, one bedroom, ground floor flat is situated within walking distance of Romford station and town centre. The development is in a quiet cul-de-sac away from traffic noise and the grounds are well maintained. There is an allocated parking space at the front of the property. The living room is large with double glazed patio doors opening onto a small patio and a South facing communal garden. The bathroom is of a high spec with a bath, overhead shower and heated towel



Scan the code above with your mobile device to go directly to the The Online Letting Agents Ltd website for Modern One Bed Flat in Romford

rail. The double bedroom has mirrored wardrobes and a view of the communal garden. The fitted kitchen includes white goods as well as an electric oven and hob and looks out to the communal garden.
Furnishing: Part furnished Date available: 25th March Sorry no pets

Location

