

Two bedroom town centre apartment to rent next to Aylesbury Station, secure parking



Warning: strpos() expects parameter 1 to be string, array given

/home/theonlin/public_html/wp-content/plugins/wp-property
/core/class_functions.php on line 410

Details

Status: Let
Reference: 963088
Town: Aylesbury
County: Buckinghamshire
Postcode: HP21 8FJ
Available From: 01/03/2012
Deposit: 1000.00
Rent: 750.00
Rent Frequency: pcm
Lease Terms (min): Six Months
Reception Rooms: 1
Bedrooms: 2
Bathrooms: 2
Furnishing: Unfurnished
DSS Allowed?: No
Pets Allowed?: No
Smokers Allowed?: Yes (Outside Only)
Features: Secure parking, next to station

Description

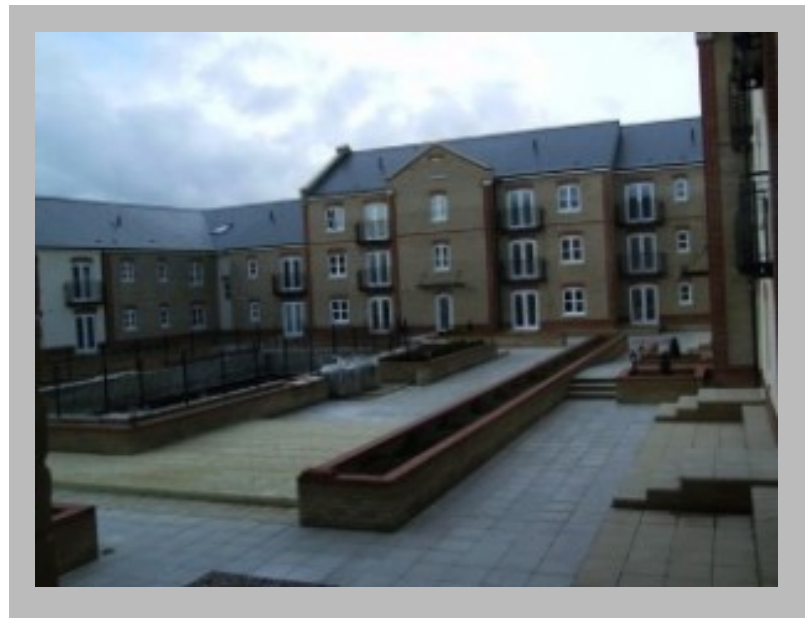
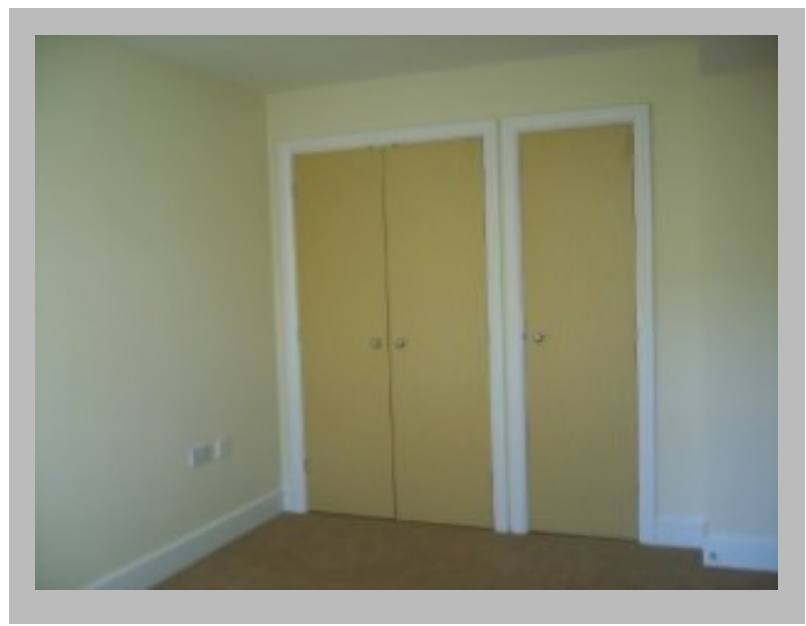
CLOSE TO TOWN – TWO BEDROOMS – A modern two bedrooms first floor apartment situated in the popular Grand Central Development within easy access of the town centre and mainline train station to London Marylebone. Accommodation comprises of security entrance, entrance hall, modern fitted kitchen inclusive of dishwasher, washing machine, fridge / freezer, oven, hob and extractor, modern lounge with Juliette Balcony, master bedroom with fitted wardrobe and ensuite shower room, further second bedroom, family bathroom, gas central heating and allocated parking for one car. Unfurnished – Available Now. (COUNCIL TAX BAND C) Sorry no DSS or Pets

Location

Features

Close to station, Close to Town Centre, En-suite, Secure parking





Scan the code above with your mobile device to go directly to the The Online Letting Agents Ltd website for Two bedroom town centre apartment to rent next to Aylesbury Station, secure parking